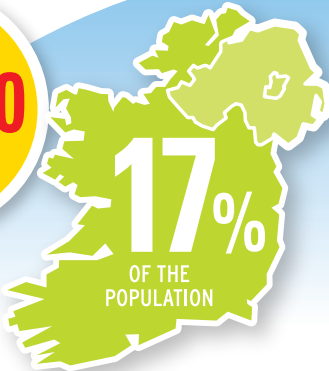


PRIVATE WELLS

720,000
PEOPLE
IN IRELAND

are supplied
by private
groundwater
sources*

*EPA 2010; CSO 2012



Properly sited,
constructed and
maintained wells
are important to
reduce the risk of
contamination



MANY PRIVATE WELLS ARE AT RISK FROM CONTAMINATION



DRINKING
CONTAMINATED
WATER CAN CAUSE
SERIOUS
ILLNESSES

**HARMFUL
PARASITES**
(Cryptosporidium)

**HARMFUL
BACTERIA**
(VTEC)

VTEC patients are up to
times more
likely to have
consumed
untreated
private water

4

Is your
wellhead
sealed?



STEP 1

CHECK YOUR WELL
Ensure your health
is not at risk

Can surface
water get
into the well?



STEP 2

CHECK FOR ANY SOURCES OF POLLUTION

SEPTIC
TANKS



1

SLURRY
LANDSPREADING



2

CHEMICAL
STORAGE



3

FUEL
STORAGE TANKS



4

STEP 3

TEST YOUR WELL WATER AT LEAST ONCE A YEAR
ideally following wet weather
(treatment may be necessary
if contaminated)

FOR MORE INFORMATION

See the Protect your Well app on
www.epa.ie
to assess your own water supply

FOR MORE ADVICE & GRANT INFORMATION

Check with your local authority,
your local environmental health officer
or the EPA at www.epa.ie

IS YOUR PRIVATE WELL AT RISK FROM CONTAMINATION?

Many people assume that because their water comes from a well or a spring that it is safe to drink ...but this is NOT necessarily the case

THERE ARE TWO MAIN THINGS TO CHECK TO MAKE SURE THAT CONTAMINATION IS NOT GETTING INTO YOUR WELL

1

Is your wellhead sealed?

2

Can surface water get into the well?

CHECK POSSIBLE SOURCES OF CONTAMINATION

SEPTIC TANKS

SLURRY LANDSPREADING

CHEMICAL STORAGE

FUEL STORAGE TANKS

ANIMALS NEAR WELLHEAD

ABANDONED BOREHOLES

YOU SHOULD GET YOUR WELL TESTED AT LEAST ONCE A YEAR

Your local authority Environment Section or HSE Environmental Health Officer may be able to advise on a suitable laboratory

IF YOUR WELL IS CONTAMINATED YOU SHOULD:

Take action to eliminate sources of contamination;
and Install treatment;

OR

Connect to a public or group water supply

VISIT YOUR LOCAL AUTHORITY WEBSITE OR THE PROTECTING YOUR PRIVATE WELL SECTION OF WWW.EPA.IE